



Powerful sun protection
with moisturizing and nourishing effects



Absolute Essence Sun UV Protector

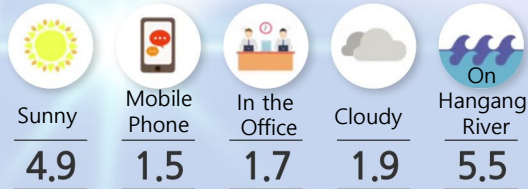
ABSOLUTE ESSENCE SUN
UV PROTECTOR

Never let down your guard under *UV rays*

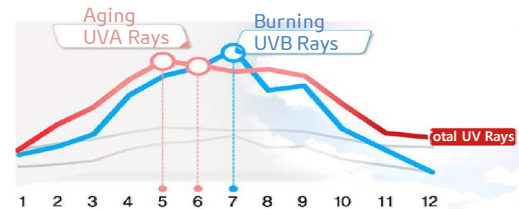
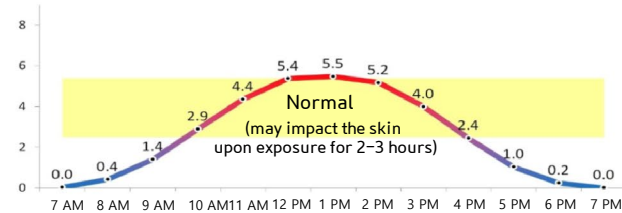
UV rays are shining down on us all year long, regardless of the weather or location. You may be tempted to let your guard down on cloudy or rainy days since there are less visible rays, but even the clouds can't completely block out UV rays even if they can block out the sun.

On cloudy days, sunlight gets scattered through the clouds, causing the amount of UV rays to actually increase.

UV ray radiation volume
in daily life



Total average UV ray index



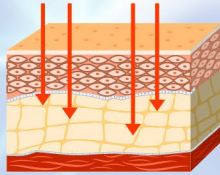
UV rays are the cause of skin stress

UV rays are not visible to the naked eye, and they are a Group 1 carcinogen according to the World Health Organization.

They are dangerous substances that forcefully penetrate the skin, cause wrinkles and various skin problems, and even cause cancer by damaging the skin's DNA.

Two types of UV rays attack the skin: the UVA and UVB rays. The type of damage they cause on our skin differs depending on their wavelengths.

UVA



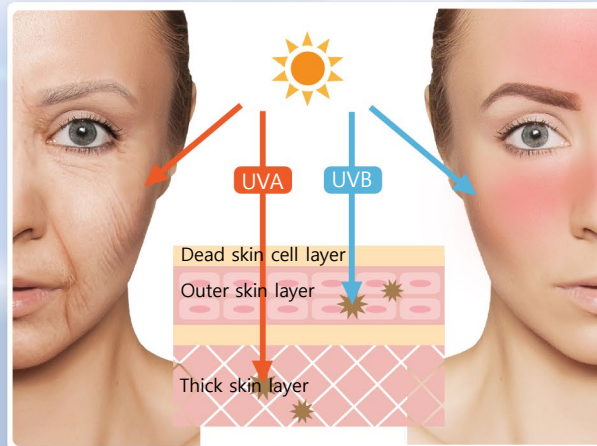
Cross-section skin view

Wavelength: 320 – 390 nm

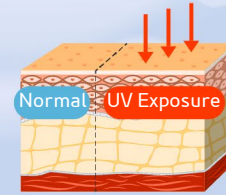
1% of all UV rays

They penetrate deep into the skin and cause wrinkles and various skin problems

Degree of UV radiation on skin according to wavelength



UVB



Cross-section skin view

Wavelength: 290 – 320 nm

5% of all UV rays

They scald the surface of skin and cause burns and hair loss

**UV rays are everywhere at all times!
If you can't avoid them, then fight back!**

Strong UV protection with nourishing effects in one!

UV rays are the source of skin stress!

UV rays may be invisible to the eye but can be found everywhere!

You can't avoid them.

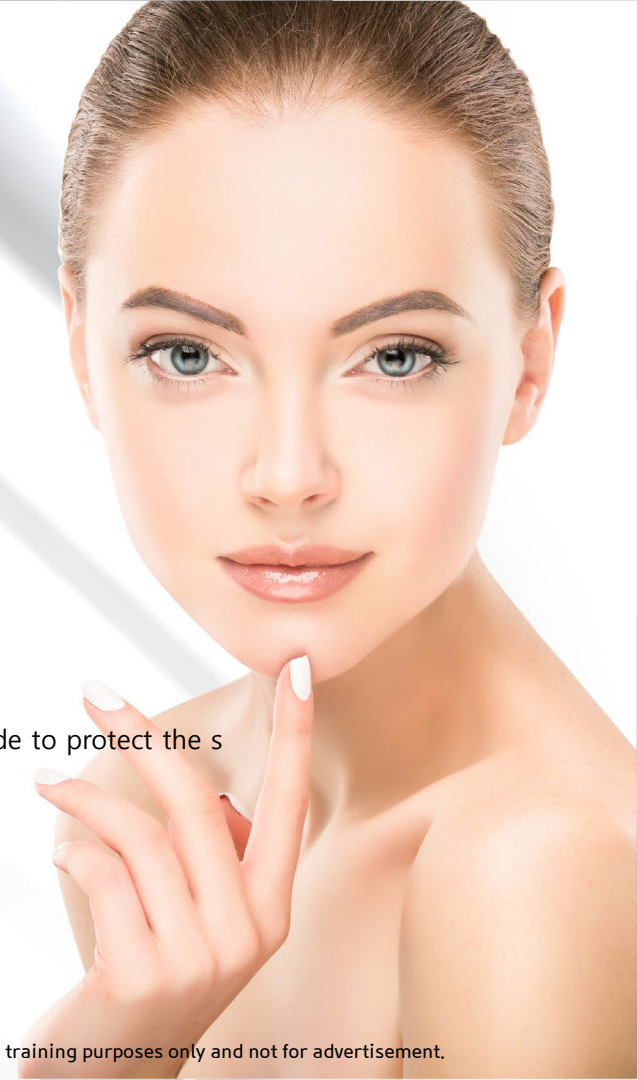
The smartest way to be free from UV rays is
to protect your skin with a good sunscreen!

The product offers smooth and transparent application without a sticky finish
and protects against UV rays with the added power of the CellActive® brightening code to protect the skin.

**Block out UV rays! All the effects of a
n essence!
Absolute Essence Sun is all you need**



**Absolute Essence Sun
UV Protector**





Strong UV protection with nourishing effects in one!

Offers UV ray protection to relieve skin stress with the benefits of an essence for healthy skin and whitening effects!

Absolute Essence Line (UV Protector) will help you achieve clean and clear skin.

Classification	Contents
Product Name	Absolute Essence Sun (UV Protector)
Volume	40 ml

Directions

Squeeze an adequate amount and spread evenly onto the skin.

Additional Information



SPF50+
PA++++



Wrinkle Improvement



Whitening

Strong UV protection with nourishing effects in one!

Skin protection plus brightening effect from natural ingredients!

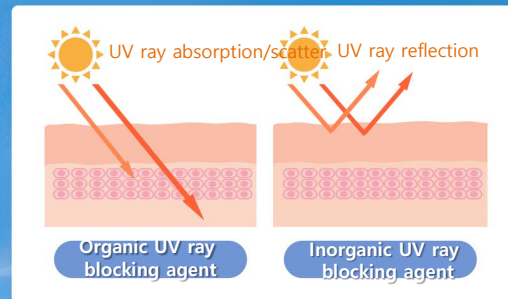


<The meaning of "naturally derived" is limited to

Product Features: Outstanding Quality

01 Dual protection from UV rays (UVA and UVB)

Effectively absorbs or reflects UV rays using a complex organic + inorganic sunscreen formula. Protects against both UVA rays, which induce skin stress, and UVB rays, the cause of sunburns and freckles.



02 Skin protection from strong UV rays

Protects the skin from powerful UV rays with a high protection factor of SPF 50+ and PA++++.

03 Luxurious texture with a makeup effect

High molecule polymers with excellent moisture loading effects offer a **refreshing and moisturizing texture** with a **smooth** and **transparent** application **without a sticky finish** for **easy cleansing** and convenient, everyday use.

Porous silica powder provides a natural, brightening effect **instead of a white cast and covers up unevenness** to enhance your bare face for natural radiance and a light makeup effect!



Product Features: Outstanding Effective Ingredients

CellActive™ Brightening Code + Portulaca extract + Centella asiatica extract

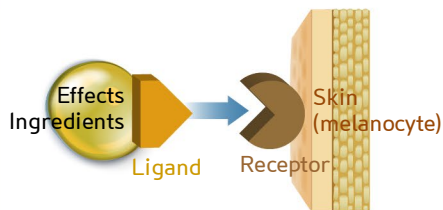
Core technology and key ingredients for brightening and conditioning damaged skin

- Brightening effects are maximized by delivering Atomy's proprietary **CellActive™ Brightening Code** in high volumes precisely to damaged areas of the skin through CellActive™ Technology
- Portulaca oleracea extract and centella asiatica extract, which help relieve skin irritation from external factors such as UV rays, soothe irritated skin and condition damaged skin

01

CellActive™ Technology

Advanced technology that encapsulates effective brightening ingredients to locate and treat skin concerns quickly and accurately



02

Brightening Code™

Upgraded skin firming and brightening effects by using dormin in large quantities, a natural ingredient extracted from plants in dormancy



Summer
Snowflake
Bulb



Daffodil
Bulb



Dragon Fruit

03

Portulaca oleracea extract

Contains natural amino acids that help soothe and treat areas of concern without causing irritation



04

Centella asiatica extract

Uses the raw material of madecassol to offer powerful soothing effects for damaged, irritated skin



<Limited to the properties of the ingredients>



APPENDIX

Additional description of the CellActive™ Code and effective ingredients

Increased protection & essence effects!



Has a smooth application without a sticky finish and an improved texture with tone correction effects, making it perfect for daily use!

Comparison with Previous Product

	Atomy Sun Cream	Absolute UV Protector Essence Sun
UV Protection	SPF50+ PA3+	SPF50+ PA4+
Type	Water in silicone type A state in which water particles are dispersed in an oil base.	Oil in water type A state in which oil particles are dispersed in a water base.
Emulsification	Emulsification method that is typically used in makeup base, sunscreen, and waterproof formula as *Suitable for outdoor or leisure activities.	Emulsification method that is typically used for lotion, cream, and essence formulas * Suitable for everyday use
Texture & Characteristics	Excellent water resistance, lasting power, and moisturizing effects. Water and sweat resistant.	Texture with a high moisture content for moist and lightweight application with a refreshing finish.
Tone Correction Effect	Natural tone correction.	Primer function that smooths out and covers pores and unevenness on the skin and naturally corrects skin tone.
Other	Smooth and matte finish.	Easy cleansing.



Effective Ingredients

CellActive™ Technology

- Ligands are attached to capsules containing effective ingredients, allowing these effective ingredients to locate areas that give rise to skin concerns
- The core technology of CellActive™ delivers effective ingredients to precisely arrive to the skin and quickly absorb for effective skincare treatment

CellActive™ Technology Mechanism

Ligand is attached to the capsule containing the active ingredients

It is combined with the receptor on the skin surface

The effective ingredients target the melanocyte

The effective ingredients exhibit precise penetration and efficacy

Helps reduce melanin activity

★ Effective ingredient encapsulation with ligand-attached capsule



Combined with receptors on the skin surface



The CellActive™ Brightening Code, an effective ingredient, targets melanocytes, which are melanin-producing cells, to help minimize melanin production and activity

Ligand: Substance attached to the receptor / **Receptor:** Molecular structure found on the surface of cells and in cytoplasm

Effective Ingredients

CellActive™ Code: IBR-Dormin (Dormin)

A natural ingredient that is extracted from plants in dormancy
(summer snowflake bulb/daffodil bulb/dragon fruit)

Dormin, extracted from summer snowflake bulbs, daffodil bulbs, and dragon fruit during dormancy, delays cytodifferentiation to prevent hyper proliferative cell disorders and protects the skin to maintain healthy skin



Efficacy
& Effect:

Improves elasticity
& vitality in the skin , Brightening



Summer Snowflake
Bulb



Daffodil
Bulb



Dragon Fruit



Dormancy

Inspired by a miraculous ancient seed that maintained its vitality for 2,000 years during dormancy, the Israeli Biotechnology Research developed dormin by applying the same dormancy technology that delays cytodifferentiation and prevents cells from aging to maintain youth



<Limited to the properties of the ingredients>

Portulaca oleracea extract

Moisturizing and soothing effects



01 Highly effective for treating areas of concerns without causing irritation.

02 Contains natural amino acids, such as glutamic acid, aspartic acid, and alginine, to soothe the skin and reduce issues such as itchiness caused by dryness.

03 Contains large volumes of dopamine and inorganic salts such as calcium oxalate, and is often used in Korea and China for its excellent moisturizing and soothing effects.

<Limited to the properties of the ingredients>

Centella asiatica extract

A raw ingredient of madecassol that is effective for relieving damaged and sensitive skin



The centalla asiatica, more widely known as the raw ingredient of madecassol, originated in eastern Africa. It grows naturally in the subtropical coast of the Indian Ocean and has been widely used as a traditional remedy for various purposes.

<Limited to the properties of the ingredients>